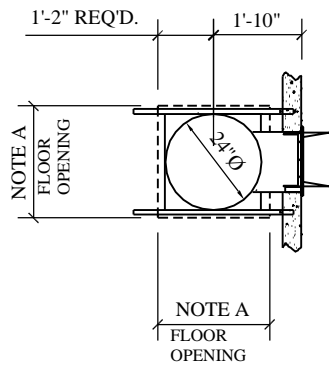
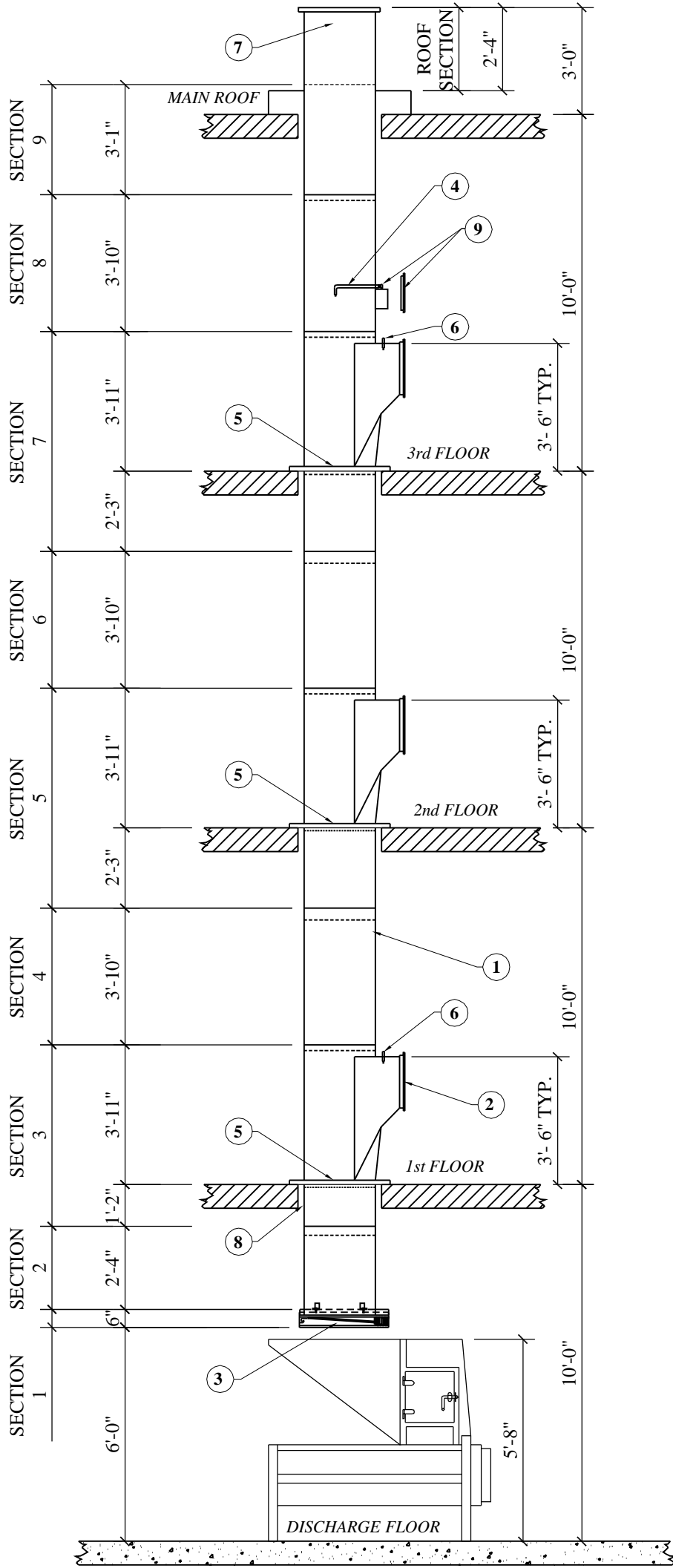


NOTES:

- A- 28" CLEAR SHAFT OPENING (INSIDE SHAFT) REQUIRED.
- B- VERIFY IN FIELD FLOOR OPENING DIMENSION AND COORDINATE FLOOR FRAME LEGS .
- C- CLEAR SHAFT OPENING = 4" + CHUTE Ø.
- D- ROUND FLOOR SLAB OPENING PREFERABLE.



TYPICAL INTAKE PLAN



TYPICAL ELEVATION VIEW DRAWING TRASH CHUTE

NOTES:

- CHUTE MEETS OR EXCEEDS ALL NFPA-82 CODE.
- ALL CHUTES TO HAVE WELDED VERTICAL SEAMS.
- PARTITIONS AROUND CHUTE NOT TO BE PLACED UNTIL AFTER CHUTE INSTALLATION.
- ROUGH OPENINGS, PLUMB AND PROPER SIZES AND LOCATIONS SHALL BE PERFORMED BY OTHERS .
- MISCELLANEOUS STEEL TO HAVE SHOP COAT OF PROTECTIVE ENAMEL.
- FOR FURNISHED ONLY PROJECTS, CONTRACTOR TO VERIFY AND APPROVE ALL DIMENSIONS ON THESE DRAWINGS WITH CONDITIONS ON THE JOB SITE. CHUTES INTERNATIONAL WILL NOT BE RESPONSIBLE FOR DEVIATIONS FROM THE DRAWING ONCE APPROVED TO FABRICATE.
- FOR FURNISHED AND INSTALLED PROJECTS, CHUTES INTERNATIONAL SHALL VERIFY ALL FLOOR HEIGHTS AND FIELD CONDITIONS PRIOR TO FABRICATION.
- IF FLOOR FRAMES ARE TO SIT ON SUB FLOORS, PLEASE PROVIDE INFORMATION REGARDING THICKNESS OF FINISHED FLOOR TO MAINTAIN REQUIRED DOOR HEIGHT.
- DUE TO MOVEMENT WHICH MAY OCCUR AFTER INSTALLATION, THE FINAL RESPONSIBILITY FOR ENSURING THAT DOORS ARE SITTING FLUSH TO WALLS MUST LIE ON TRADES CONSTRUCTING THESE WALLS.
- THIS DRAWING IS THE PROPERTY OF CHUTES International Manufacturing AND LOANED ON THE CONDITION THAT IT IS NOT TO BE REPRODUCED AND IS NOT TO BE USED IN WHOLE OR PART TO FURNISH INFORMATION FOR THE MAKING OF DRAWINGS OR CHUTE SECTIONS.
- LINTEL, IF REQUIRED ABOVE DOOR, BY OTHERS.
- ALL SECTIONS OF CHUTE CAN BE ROTATED AS NEEDED. (SEE ARCHITECTURAL DRAWINGS FOR DOOR ORIENTATION)
- OFFSETS AND CHUTE SIZE REDUCTIONS REQUIRE APPROVAL OF LOCAL FIRE MARSHAL OR BUILDING CODE INSPECTOR (RESPONSIBILITY OF OTHERS).

- | | |
|---|--|
| 1 | Typical chute riser to be 24" diameter, fabricated with 16 ga. aluminized steel. (Stainless steel optional) |
| 2 | Typical intake door 15" wide x 18" high, bottom hinged, noiseless, self-closing, self-latching, stainless steel front, back and skirt, bearing a UL label 1-1/2 hour, max. temp. rise 250°F., 30 min. Embossed "RUBBISH" stainless steel trim. ADA lever handle with lock and 2 keys. |
| 3 | UL labled accordion type discharge. Interlocking type spring loaded blades held open by fusible link assembly for automatic closing with heat rising above 165° F. |
| 4 | Flushing spray head with 3/4" connector ready for connection by others. |
| 5 | Typical chute support, by means of clips welded at quarters, to sit on angle iron and bar grid type floor frame. Steel to be 3/16" thick minimum. (Structural support of chute floor frame to be provided by others). |
| 6 | 165°F. Sprinklers to be installed at top intake, alternate intakes below, and first intake floor. Ready for connection by others. (Sprinklers are on: 3rd and 1st floors on this system) |
| 7 | Vent to extend full diameter of same gauge as chute thru roof to a height of 3'-0" (per NFPA-82;2003). Vent to be covered with a hinged raincap with 1" air space and holdown clips. Roof extension to be aluminized finish with flat/pitched/curb roof flashing, as required. |
| 8 | Floor retainer flange, 1 provided at discharge ceiling. |
| 9 | Access door to be 15" X 15", side hinged and bearing UL label as described in item #2. ADA lever handle with lock and 2 keys. Manual disinfecting and sanitizing unit where designated on drawing. (Optional Accessory). (Vacuum breaker, control valve and backflow preventer by others.) |

1ST SUBMITTAL		
RESUBMITTAL		
APPROVED FOR FAB.		

Job Name:	
Customer:	
Location:	
Item:	1- TRASH CHUTE

PO No.		JOB No.	
--------	--	---------	--

	Phone: (301) 753-4100
	Toll Free: 800-88-CHUTE
	Fax: (301) 753-4109
	4400 Austin Lane
	White Plains, MD 20695
	WWW.CHUTES.COM